

6036-1

inches

S SERIES SINGLE THRESHOLD SHOWER BASE

Exterior Dimensions: 60 1/4 x 36 x 5 3/4



FEATURES

- Will not mold or mildew, no grout to clean
- Textured, slip-resistant surface
- 4 3/4" threshold
- No surface coating to chip or crack
- Features The Edge, a patented threshold design that creates a "fourth flange" to direct water away from the shower exterior and towards the drain
- Wedge Lock Seal creates a secure and worry-free drain installation
- Available in White only
- Limited Lifetime – Residential
Limited 5-year – Commercial

STANDARDS AND RATINGS

- American National Standard Institute—ANSI Z124.1.2
- International Association of Plumbing and Mechanical Officials (IAPMO)—Listed
- CSA Standard B45.5 by IAPMO
- Uniform Plumbing Code (UPC)

Dimensions may vary $\pm 1/4$ " inch.

Please check unit before installation.

*See terms and conditions for details.

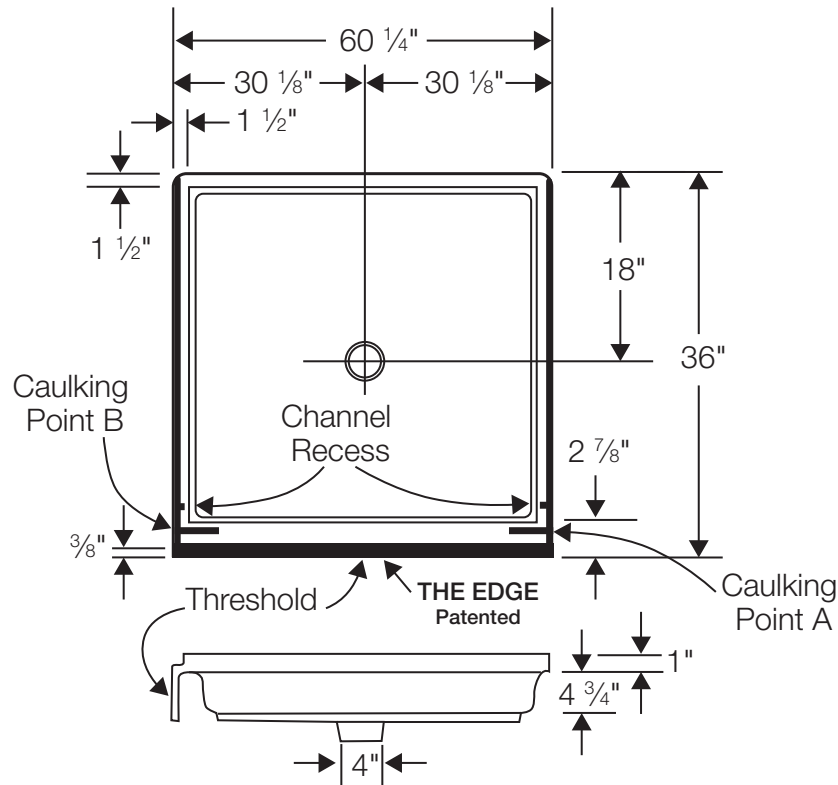
FLORESTONE
MADE FOR THE TRADE



florestone.com

6036-1

Exterior Dimensions:
60 1/4 x 36 x 5 3/4 inches



FEATURES Dimensional Tolerance $\pm 1/4"$. Dimensions needed for site preparation should be measured from the unit. American Bath Group assumes no responsibility for preparatory work.

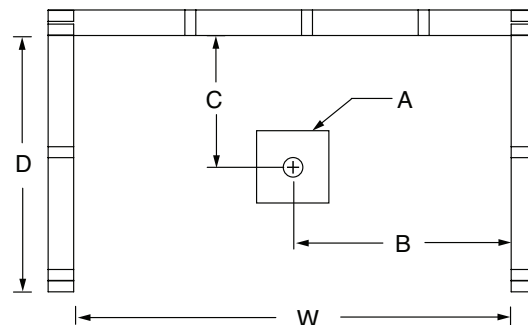
Model #	Item #	Drain	Product Weight	Pkg. Wt.
S Series Shower Pan 6036-1	1603611	Center	79 lbs	84 lbs

DIMENSIONS

Specifications	inches
Width:	60 1/4
Depth:	36
Height: Overall / Net	5 3/4 / 4 3/4
Enclosure Opening	57
Skirt Height	4 3/4
Drain Rough-In (from Back Wall)	18
Drain Rough-In (from Side Wall)	30 1/8
Drain: Diameter / Clearance	4

FRAMING DIMENSIONS INCHES

Type	D Depth	W Width	A	B	C
Alcove	36 3/16	60 3/8	Box Out	30 3/16	18 3/8



Rev. 03.2025

