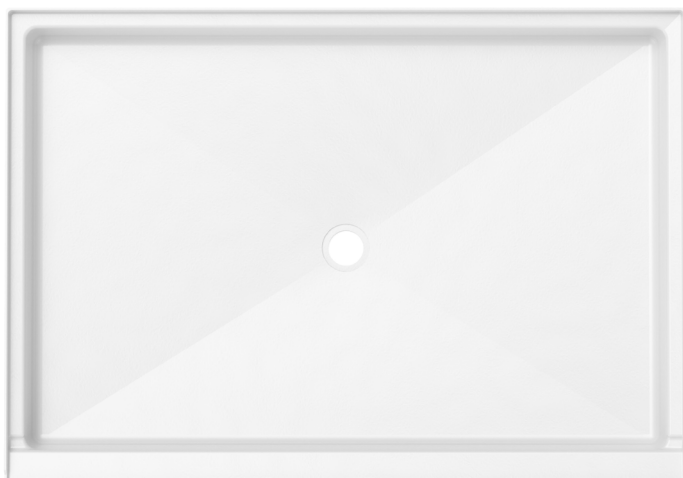


# 6042-1

inches

## S SERIES SINGLE THRESHOLD SHOWER BASE

Exterior Dimensions: 60 1/4 x 42 x 5 3/4



### FEATURES

- Will not mold or mildew, no grout to clean
- Textured, slip-resistant surface
- 4 3/4" threshold
- No surface coating to chip or crack
- Features The Edge, a patented threshold design that creates a "fourth flange" to direct water away from the shower exterior and towards the drain
- Wedge Lock Seal creates a secure and worry-free drain installation
- Available in White only
- Limited Lifetime – Residential  
Limited 5-year – Commercial

### STANDARDS AND RATINGS

- American National Standard Institute—ANSI Z124.1.2
- International Association of Plumbing and Mechanical Officials (IAPMO)—Listed
- CSA Standard B45.5 by IAPMO
- Uniform Plumbing Code (UPC)

Dimensions may vary  $\pm$  1/4" inch.

Please check unit before installation.

\*See terms and conditions for details.

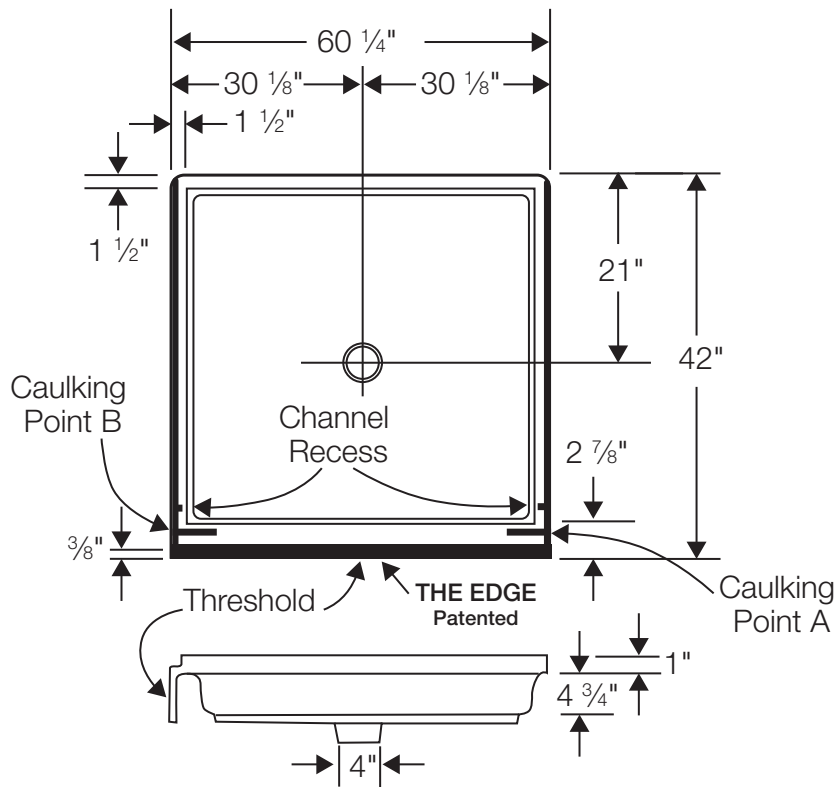
**FLORESTONE**  
MADE FOR THE TRADE



[florestone.com](http://florestone.com)

### 6042-1

Exterior Dimensions:  
60 x 42 x 5 ¾ inches



**FEATURES** Dimensional Tolerance  $\pm \frac{1}{4}$ ". Dimensions needed for site preparation should be measured from the unit. American Bath Group assumes no responsibility for preparatory work.

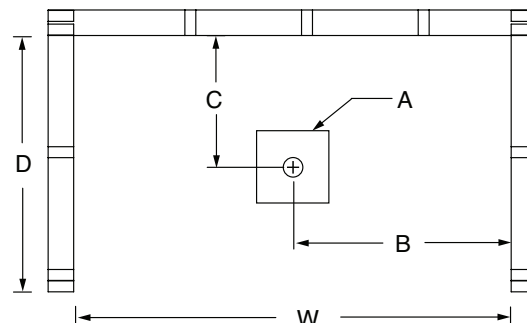
Model #	Item #	Drain	Product Weight	Pkg. Wt.
S Series Shower Pan 6042-1	1604211	Center	86 lbs	94 lbs

### DIMENSIONS

Specifications	inches
Width:	60 ¼
Depth:	42
Height: Overall / Net	5 ¾ / 4 ¾
Enclosure Opening	57
Skirt Height	4 ¾
Drain Rough-In (from Back Wall)	21
Drain Rough-In (from Side Wall)	30 ⅛
Drain: Diameter / Clearance	4

### FRAMING DIMENSIONS INCHES

Type	D Depth	W Width	A	B	C
Alcove	42 ⅞	60 ⅞	Box Out	30 ⅞	21 ⅞



Rev. 03.25

